

 #WCD2019

AEDV

HIGHLIGHTS

24th World Congress of Dermatology (WCD)

10-15
JUNIO
2019

Milán



Patrocina:

janssen  Immunology
PHARMACEUTICAL COMPANIES OF 

Organiza:



AEDV

HIGHLIGHTS

24th World Congress of Dermatology (WCD)

10-15
JUNIO
2019

Milán



Catalogación genómica de los tumores melanocíticos y subtipos de melanoma

Dra. Esther de Eusebio Murillo

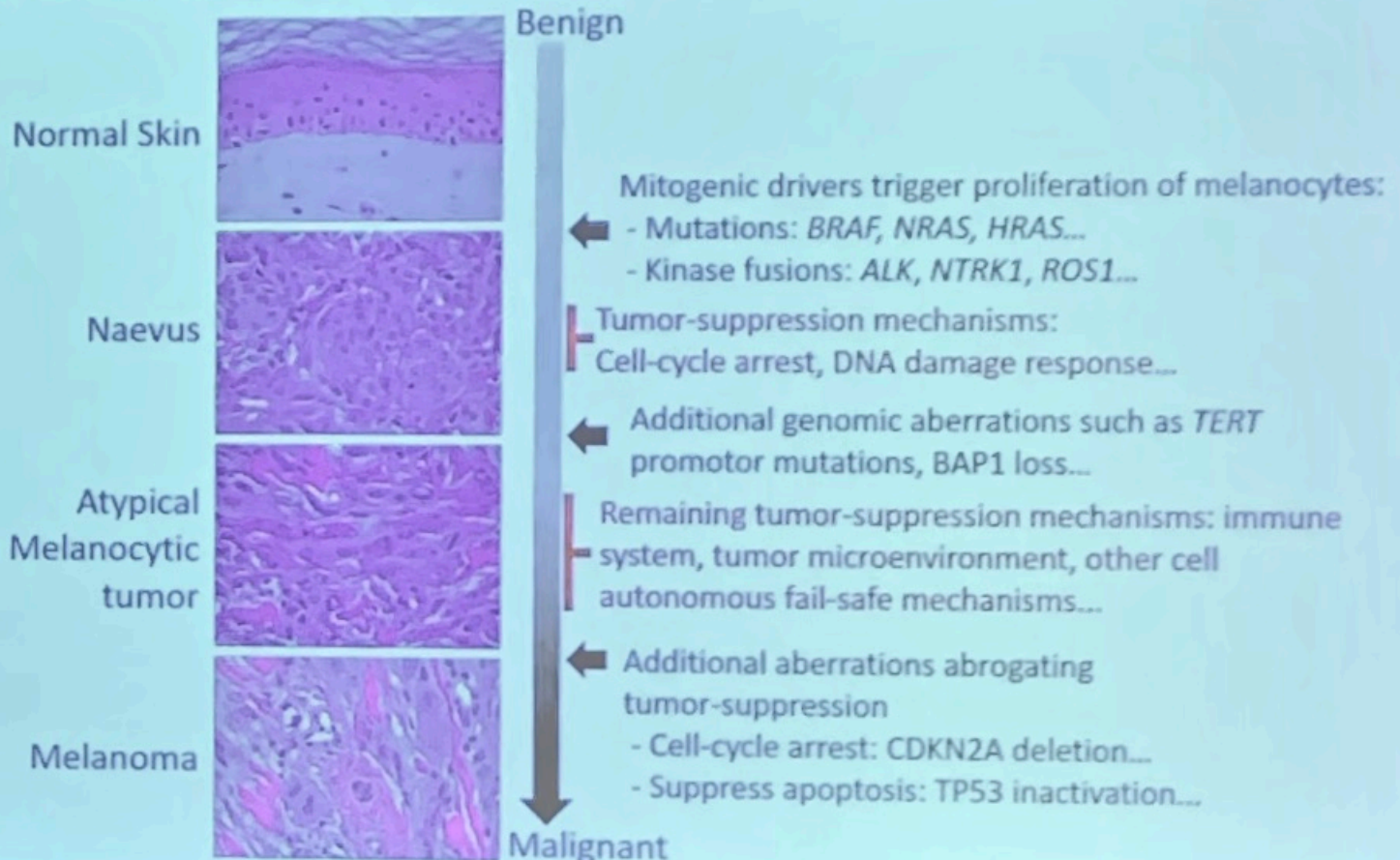
Patrocina:

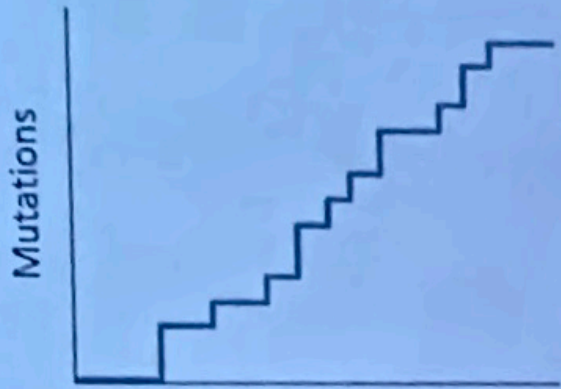


Organiza:



Classical Tumor Progression Model

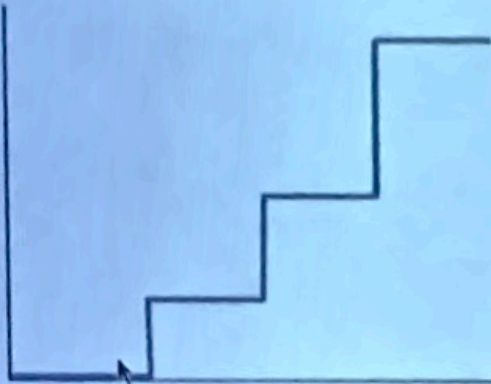




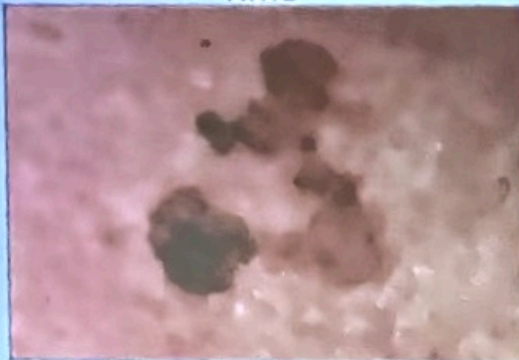
Time



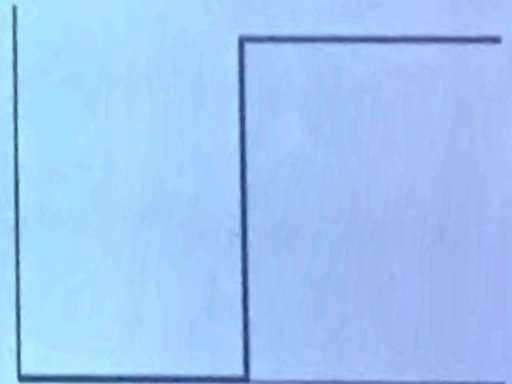
Lentigo maligna melanoma



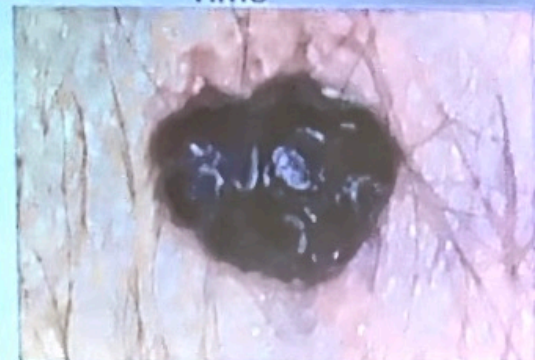
Time



Superficial spreading melanoma



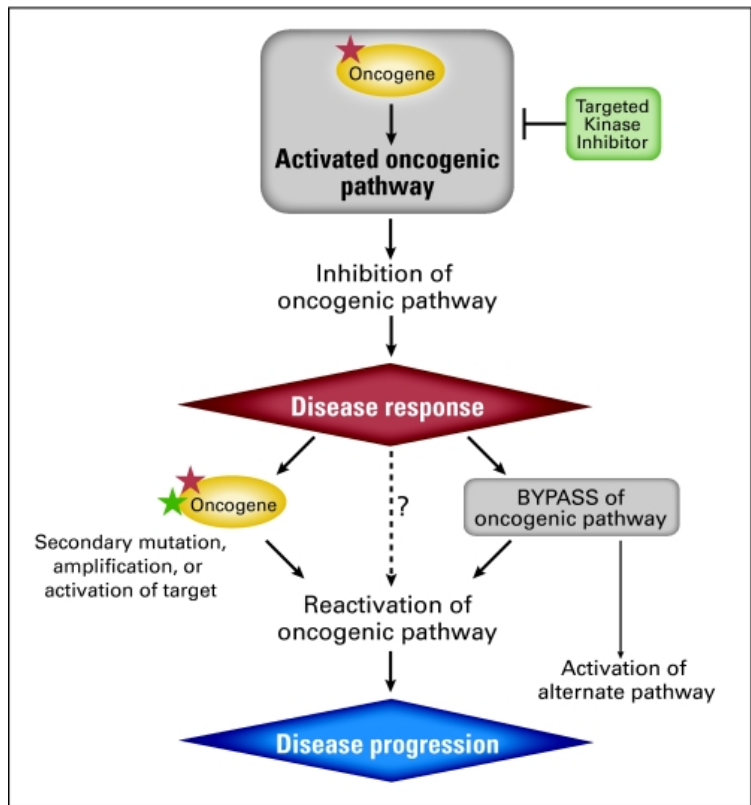
Time

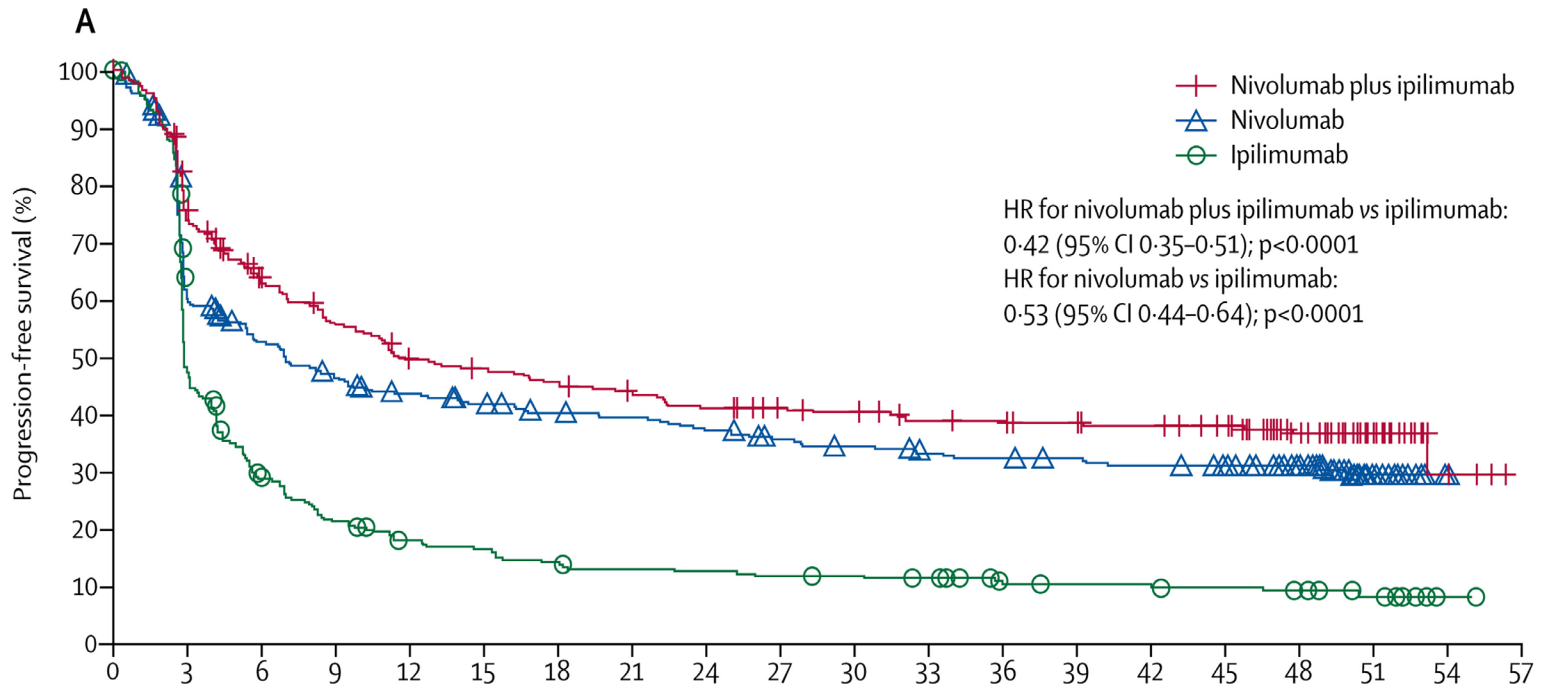


Nodular melanoma

Milán



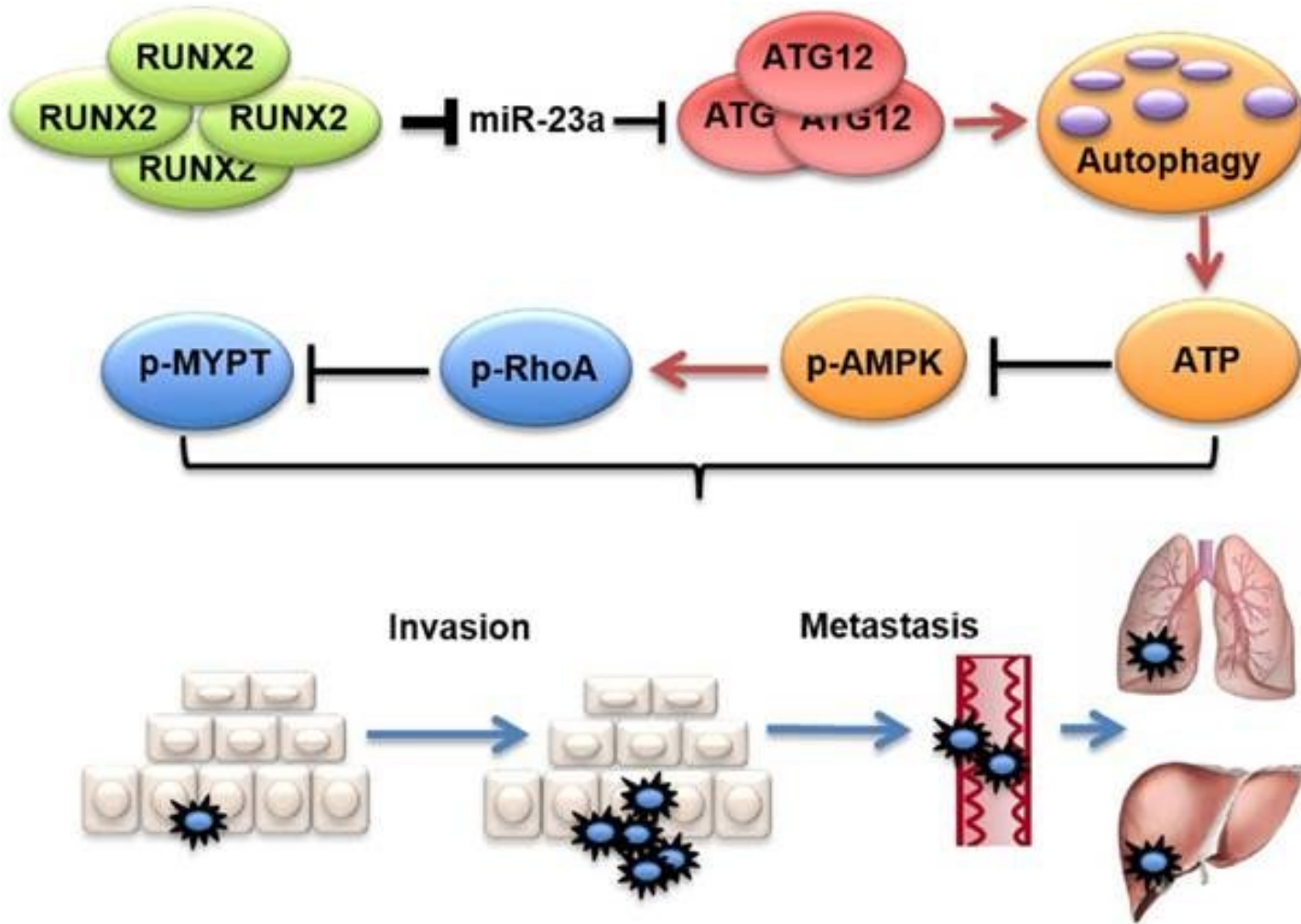




**Number at risk
(number censored)**

	0	3	6	9	12	15	18	21	24	27	30	33	36	39	42	45	48	51	54	57
Nivolumab plus ipilimumab	314 (0)	218 (16)	175 (27)	155 (28)	136 (30)	131 (31)	124 (31)	117 (33)	110 (33)	104 (38)	101 (40)	95 (42)	93 (44)	89 (47)	88 (47)	81 (54)	53 (80)	19 (114)	3 (129)	0 (132)
Nivolumab	316 (0)	177 (19)	151 (24)	132 (25)	120 (29)	112 (32)	106 (34)	103 (35)	97 (35)	88 (40)	84 (41)	79 (43)	77 (43)	75 (45)	72 (45)	66 (51)	50 (67)	18 (97)	0 (115)	0 (115)
Ipilimumab	315 (0)	136 (25)	78 (30)	58 (30)	46 (33)	42 (33)	34 (34)	32 (34)	31 (34)	29 (34)	28 (35)	26 (36)	19 (41)	18 (42)	16 (43)	16 (43)	11 (47)	7 (50)	1 (56)	0 (57)





Down-regulated miR-23a Contributes to the Metastasis of Cutaneous Melanoma by Promoting Autophagy

Weinan Guo¹, Huina Wang¹, Yuqi Yang¹, Sen Guo¹, Weigang Zhang, Yu Liu, Xiuli Yi, Jingjing Ma, Tao Zhao, Lin Liu, Zhe Jian, Ling Liu, Gang Wang, Tianwen Gao, Qiong Shi^{2,3}, and Chunying Li^{2,3}



Melanomas arising in sun-exposed skin	Pathway I:	Low-CSD melanoma/superficial spreading melanoma
	Pathway II:	High-CSD melanoma/lentigo maligna melanoma
	Pathway III:	Desmoplastic melanoma
Melanomas arising at sun-shielded sites or without known etiological associations with UV radiation exposure	Pathway IV:	Malignant Spitz tumour (Spitz melanoma)
	Pathway V:	Acral melanoma
	Pathway VI:	Mucosal melanoma
	Pathway VII:	Melanoma arising in congenital naevus
	Pathway VIII:	Melanoma arising in blue naevus
	Pathway IX:	Uveal melanoma



	Low UV radiation exposure / CSD				High UV radiation exposure / CS	
Pathway	I				II	III
Endpoint of pathway	Low-CSD melanoma / SSM				High-CSD melanoma / LMM	Desmoplastic melanoma
Benign neoplasms (naevi)	Naevus				? IMP	? IMP
Intermediate / low-grade dysplasias and melanocytomas	Low-grade dysplasia	EIN	DPN		? IAMP/dysplasia	? IAMP/dysplasia
Intermediate / high-grade dysplasias and melanocytomas	High-grade dysplasia / MIS	BAP1-inactivated melanocytoma / MELTUMP	Deep penetrating melanocytoma / MELTUMP	PEM / MELTUMP	Lentigo maligna (MIS)	MiS
Malignant neoplasms	Low-CSD melanoma / SSM (VGP)	Melanoma in BiN (rare)	Melanoma in DPN (rare)	Melanoma in PEM (rare)	LMM (VGP)	Desmoplastic melanoma
Common mutations ^{a,b}	BRAF p.V600E; or NRAS TERT; CDKN2A; TP53; PTEN	BRAF or NRAS • BAP1	BRAF , MAP2K1 , or NRAS • CTNNB1 or APC	BRAF + PRKAR1A or PRKCA	NRAS , BRAF (non-p.V600E), KIT , or NF1 TERT; CDKN2A; TP53; PTEN; RAC1	NF1 ; ERBB2 ; MAP2K1 ; MAP3K1 ; BRAF ; EGFR ; MET TERT; NFKBIE ; NRAS ; PIK3CA ; PTPN11

Low to no (or variable/incidental) UV radiation exposure / CSD

IV	V	VI	VII	VIII	IX
Malignant Spitz tumour / Spitz melanoma	Acral melanoma	Mucosal melanoma	Melanoma in CN	Melanoma in BN	Uveal melanoma
Spitz naevus	? Acral naevus	? Melanosis	CN	Blue naevus	? Naevus?
Atypical Spitz tumour (melanocytoma)	IAMP / dysplasia	Atypical melanosis / dysplasia / IAMPUS	Nodule in CN (melanocytoma)	(Atypical) CEN (melanocytoma)	?
STUMP / MELTUMP	Acral MIS	Mucosal MIS	MIS in CN	Atypical CBN	?
Malignant Spitz tumour / Spitz melanoma (tumorigenic)	Acral melanoma (VGP)	Mucosal lentiginous melanoma (VGP)	Melanoma in CN (tumorigenic)	Melanoma in blue naevus (tumorigenic)	Uveal melanoma
HRAS; LK; ROS1; RET; NTRK1; NTRK3; BRAF; or MET	KIT, NRAS, BRAF; HRAS; KRAS; NTRK3; ALK; or NF1	KIT, NRAS, KRAS or BRAF	NRAS; BRAF p V600E (small lesions); or BRAF	GNAQ; GNA11; or CYSLTR2	GNAQ, GNA11, CYSLTR2, or PLCB4
CDKN2A	CDKN2A; TERT; CCND1; GAB2	NF1; CDKN2A; SF3B1; CCND1; CDK4; MDM2		BAP1; EIF1AX; SF3B1	BAP1 SF3B1; EIF1AX;

Milan

