

 #WCD2019

AEDV

HIGHLIGHTS

24th World Congress of Dermatology (WCD)

10-15
JUNIO
2019

Milán



Patrocina:

janssen  Immunology
PHARMACEUTICAL COMPANIES OF 

Organiza:



AEDV

HIGHLIGHTS

24th World Congress of Dermatology (WCD)

10-15
JUNIO
2019

Milán



Oncological dermatology and surgery

Esther de Eusebio

Patrocina:



Organiza:



AEDV

HIGHLIGHTS

24th World Congress of Dermatology (WCD)

10-15
JUNIO
2019

Milán



Paraneoplastic dermatoses

Patrocina:

janssen  Immunology
PHARMACEUTICAL COMPANIES OF 

Organiza:



Paraneoplastic Dermatomyositis

The risk of neoplasm:

- Is present in both genders
- Is augmented in all groups of age but is higher in those older than 44
- Is highest in the 1st year after diagnosis but persists beyond the fifth year

Neoplasm screening is necessary in all patients older than 15 years diagnosed with DM and must be repeated until the third year after the diagnosis

New paraneoplastic associations

- **Pityriasis Lichenoides acuta: (PLEVA)**

T-cell predominant infiltrate. T-cell clonality in a subset of patients.

Associated with cutaneous T-cell lymphoma and large plaque parapsoriasis

- **A series of patients presented association with:**

- Angioimmunoblastic T-cell lymphoma
- Diffuse large B-cell lymphoma
- Cutaneous T-cell lymphoma
- JAK2 + Polycythemia Vera
- Peripheral B-cell lymphoma
- Multiple Myeloma
- Adenocarcinoma of prostate
- Aplastic anemia



New paraneoplastic associations

Paraneoplastic granuloma annulare

- Occurring within 6 months of dx of solid organ malignancy
- Persistent GA that resolved with cancer treatment
- Lung cancer most common
- Clinical & histopathologic features similar to classic GA
- Generalized, perivascular inflammatory infiltrate and refractory to treatment



[J Am Acad Dermatol.](#) 2018 Nov;79(5):913-920.e1. doi: 10.1016/j.jaad.2018.06.022. Epub 2018 Jun 18.

Clinical and histopathologic features of paraneoplastic granuloma annulare in association with solid organ malignancies: A case-control study.

[Mangold AR](#)¹, [Cumsky HJL](#)², [Costello CM](#)³, [Xie DY](#)⁴, [Buras MR](#)⁵, [Nelson SA](#)⁶, [DiCaudo DJ](#)⁶, [Sekulic A](#)⁶, [Pittelkow MR](#)⁶.



Paraneoplastic erythroderma

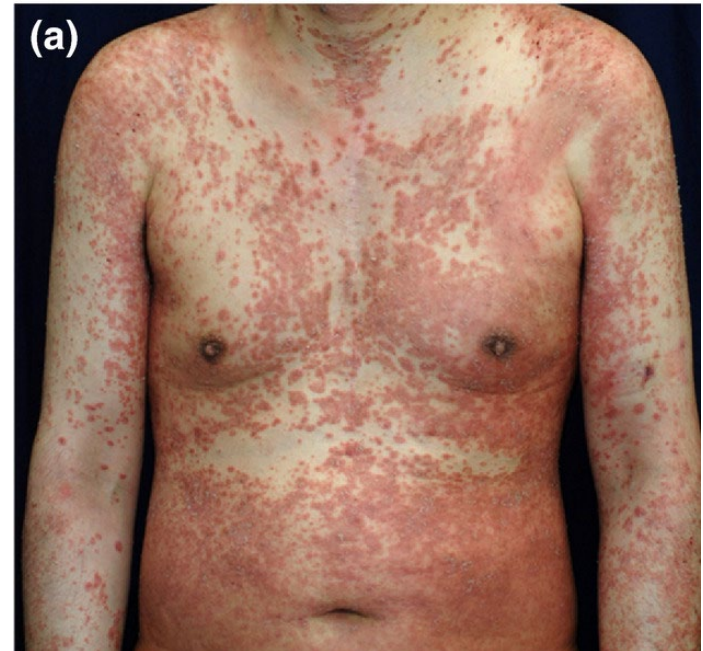
Suspect underlying malignancy when:

- Other possible origins have been dismissed
- Insidious and progressive course, recalcitrant to conventional therapy

Repeat biopsy in TCCL and Sézary Syndrome

Special consideration:

- Papuloerythroderma of Ofuji: higher risk of malignancies
- GVHD-like erythroderma associated with thymoma: multi-organ autoimmunity



Letter to the Editor | [Full Access](#)

Thymoma-associated multi-organ autoimmunity: two cases and a review of the literature

K. Shiba, Y. Fujita, H. Miyazawa, K. Muramatsu, M. Watanabe, M. Nishimura, S. Shinkuma, T. Nomura, W. Nishie, J. Taguchi, I. Kinoshita, H. Shimizu

First published: 03 January 2017 | <https://doi.org/10.1111/jdv.14108> | Cited by: 4



Paraneoplastic bullous pyoderma gangrenosum

38 cases of bullous pyoderma gangrenosum

- Hematologic neoplasms 65,8%
 - Acute myeloblastic leukemia (44,5%)
 - Chronic myelogenous leukemia (10,5%)
 - Myelodysplastic syndrome (5,3%)
 - Multiple myeloma (2,6%)



An Bras Dermatol. 2018 Jan-Feb;93(1):133-134. doi: 10.1590/abd1806-4841.20187031.

Bullous pyoderma gangrenosum as a predictor of hematological malignancies.

Vacas AS¹, Bollea-Garlatti ML¹, Torre AC¹, Galimberti RL².

AEDV

HIGHLIGHTS

24th World Congress of Dermatology (WCD)

10-15
JUNIO
2019

Milán



Management of surgical complications

Patrocina:



Organiza:



Management of postoperative hypertrophic scars

- CO2 Laser
- Fraccionated laser
 - Fractionated CO2
 - Fractionated nonablative
- Dermoabrasion
 - Mechanic
 - Manual



HOW WE DO IT

A Simple Technique to Perform Manual Dermabrasion with Sandpaper

LEONIDAS PAVLIDIS, MD, PhD, AND GEORGIA-ALEXANDRA SPYROPOULOU, MD, PhD*